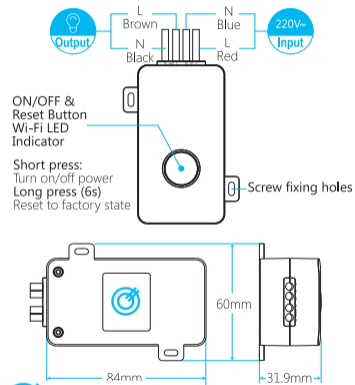
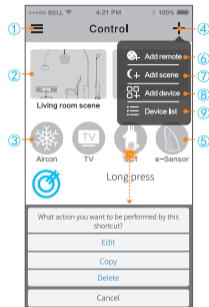


Product Intro



Control panel



- | | |
|-------------------------|------------------------------------|
| ① Main menu | ⑥ Tap to add remote control panel; |
| ② Scene icon | ⑦ Tap to add scene; |
| ③ Remote panel shortcut | ⑧ Tap to add device; |
| ④ Function menu | ⑨ Tap to view added devices. |
| ⑤ Device icon | |

FAQs

What's the meaning of each status of LED indicator?

LED Status	Function
Blue LED blinks slowly until off	Configuration is successful
Blue LED blinks rapidly	Resetting
Blue LED is on	Power is on
Blue LED is off	Power is off

How many timer tasks can be set at most on the smart timer plug?

- Support 3 types of timer and 25 timer tasks.

Caution:

- Do not connect after each other. (Nicht hintereinander stecken).
- Only indoor use. (Nur zur Verwendung in trockenen Räumen).
- To disconnect Voltage pull the plug. (Spannungsfrei nur bei gezogenem Stecker).

Note:

- This product supports only Wi-Fi 802.11 b/g/n (2.4G).
- Please follow the instruction to set up your device. In case of any issue, please contact the authorized dealers or BroadLink customer service.
- Specifications may be altered without prior notice. Please subject to the actual product performance.

BroadLink

Contros

Wi-Fi Controlled Switch

Quick User Guide

Representante en Chile



www.tecnigrab.cl
 (+562) 2302 1596
 (+562) 2814 6505

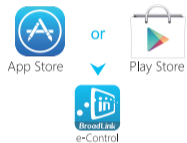
Customer Service

contacto@tecnigrab.cl

Install App

Method 1

Search "e-Control" on Apple App Store or Google Play Store, download and install the e-Control App.



Method 2

Scan QR code from package box / user guide or visit <http://upgrade.broadlink.com.cn/getapp> on phone to download and install the App.



Prepare

① Connect input wires according to the diagram

**⚠ PRO INSTALL ONLY
POWER OFF BEFORE WIRING**

② Turn on the power and make sure the device is in reset mode
LED indicator flash 2-3 times/sec

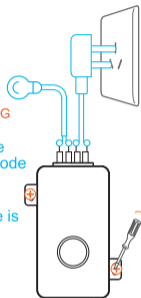
③ Make sure your smart phone is connected to Wi-Fi network



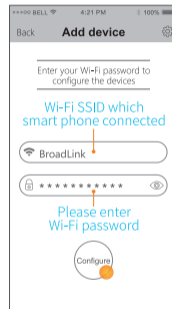
④ Open the App and configure the device to the network following "Add device" wizard

⑤ Connect output wires to appliance according to the diagram

NOTE DO NOT use non-ASCII characters in Wi-Fi name or password.
The device supports Wi-Fi of 2.4G 802.11 b/g/n only.



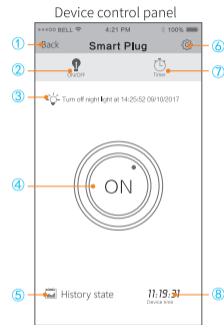
Configure



If the configuration is failed please reset the device and re-configure it.

Refer to "product Intro"

Use



- | | |
|------------------------|-----------------------------|
| ① Back to control page | ⑤ Tap to view history state |
| ② Real-time control | ⑥ Device settings |
| ③ Timer status | ⑦ Timer settings |
| ④ ON/OFF button | ⑧ Device time |